

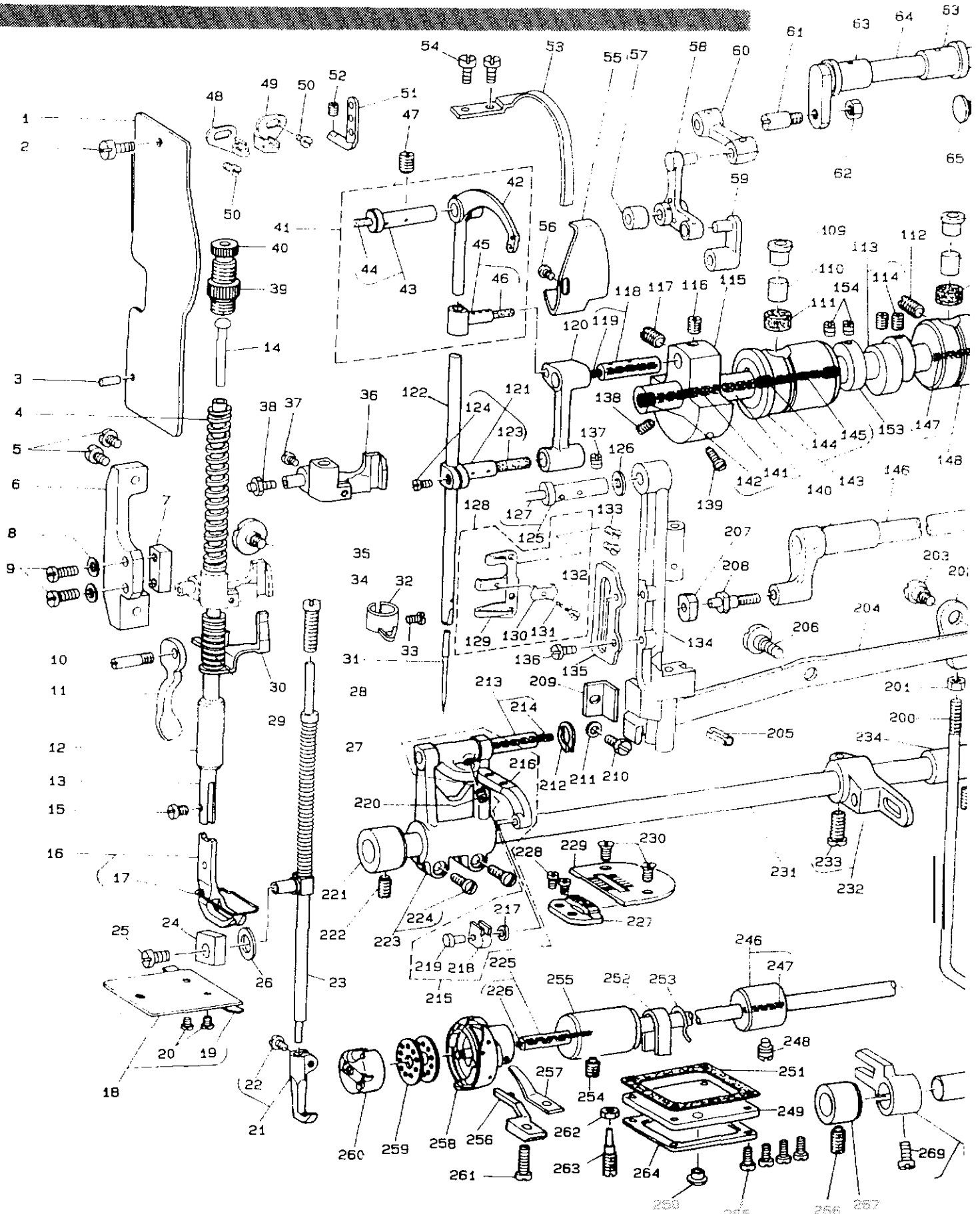
1-Needle,Lockstitch,Compound Walking Foot Needle Feed  
Industrial Sewing Machine with a Large Bobbin  
一本針本縫総合送りマシン

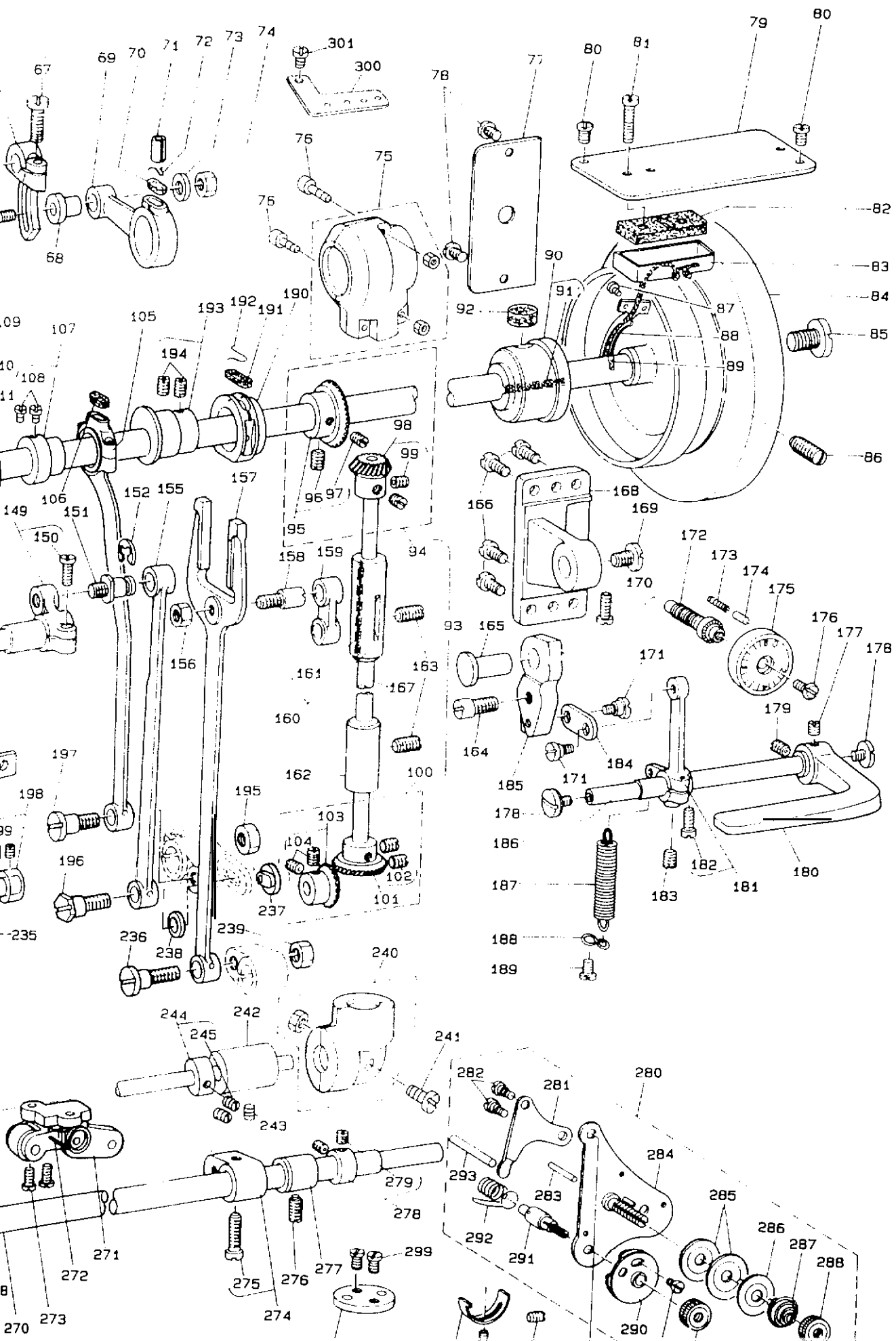
**JUKI**

**DNU-241H**

**PARTS LIST**

**BE241H20PJA**  
No.0146-02





REF. NO	NOTE	PART NO.	DESCRIPTION	QTY	REF. NO	NOTE	PART NO.	DESCRIPTION	QTY
1		B1121-241-H00	FACE PLATE	1	111		B1203-051-000	OIL FELT	1
2		SS-709010-SP	SCREW 9/64-40 L=6	1	112		SS-815150-SP	SCREW 15/64-28 L=10.5	1
3		B1107-051-000	FACE PLATE PIN	1	113		G1450-055-000	TOP FEED CAM ASM.	1
4		B1509-227-000-A	PRESSER SPRING	1	114		SS-8660810-TP	SCREW 1/4-40 L=6	1
5		SS-7621040-SP	SCREW 3/16-32 L=3.5	1	115		B1203-051-000	COUNTERWEIGHT	1
6		B1464-241-H00	PRESSER BAR BRACKET	1	116		SS-8680540-SP	SCREW 9/32-28 L=4.5	1
7		D1463-241-F00	PRESSER BAR BRACKET GUIDE	1	117		SS-8680730-SP	SCREW 9/32-28 L=7	1
8		WP-0501016-S0	WASHER 5X10.5X1	1	118		B1210-051-000	NEEDLE BAR CRANK PIN AS	1
9		SS-6621410-SP	SCREW 3/16-32 L=14	1	119		CO-5050000-00	OIL WICK	1
10		B1515-051-000	HAND LIFTER PIN	1	120		B1408-051-000	NEEDLE BAR CRANK ASS	1
11		B1512-141-000	HAND LIFTER	1	121		B1431-053-030	NEEDLE BAR CONNECTION	1
12		B1502-541-000	PRESSER BAR BUSHING, LOWER	1	122		B1401-053-000	NEEDLE BAR	1
13		B1501-551-000	PRESSER BAR	1	123		B1412-051-000	FELT	1
14		B1510-227-000	PRESSER GUIDE BAR	1	124		SS-7090910-SP	SCREW 3/8-40 L= 3.5	1
15		SS-6000910-TP	SCREW 9/64-40 L=9	1	125		B1005-051-000	TAKE-UP LEVER PIN ASM.	1
16		B1525-241-H00	PRESSER FOOT ASM.	1	126		B1208-019-000	WASHER	1
17		103-07905	FINGER GUARD	(1)	127		CO-2020000-00	OIL WICK	1
18		B1112-241-H00	RED SLIDE ASM.	1	128		B1130-521-000	THREAD GUIDE ASM., LOW	1
19		A1111-007-000	SLIDE PLATE SPRING	(1)	129		B1130-521-000	THREAD GUIDE	1
20		SS-6090210-SP	SCREW 3/32-56 L=1.9	(2)	130		B1131-521-000	THREAD PRESSER PLATE	1
21		B1470-241-H00	WALKING FOOT ASM.	1	131		B1122-521-000	THREAD PRESSER PLATE SP	1
22		B1471-241-H00	SCREW	(1)	132		SO-0380551-SL	HINGE SCREW D= 3.80 H=	1
23		B1506-553-000	WALKING BAR	1	133		SS-2090710-SP	SCREW 9/64-40 L=7	1
24		B1414-555-000	SLIDE BLOCK	1	134		B1420-563-000	NEEDLE BAR FRAME	1
25		SS-7110510-SP	SCREW 11/64-40 L=5	1	135		B1487-503-000	UPPER FEED BAR GUIDE	1
26		105-03701	FELT	(1)	136		SS-7110910-SP	SCREW	1
27		B1468-053-000	WALKING BAR SPRING	1	137		SS-815150-SP	SCREW 15/64-28 L=10.5	1
28		B1467-053-000	WALKING BAR ASM.	1	138		SS-8681050-TP	SCREW 9/32-28 L=10	1
29		B1462-053-000	THREAD RELEASE SPRING	1	139		SS-7681750-TP	SCREW 9/32-28 L=16.5	1
30		B1460-246-000	THREAD RELEASE GUIDE ASM.	1	140		B1201-241-H00-A	MAIN SHAFT ASM.	1
31		MDP-17082300	NEEDLE DPX17 #23	1	141		CO-3030000-00	OIL WICK	1
32		103-08401	NEEDLE BAR THREAD GUIDE	1	142		TA-0500601-00	PLUG D=5X5.4 L=6	1
33		SS-7080510-TP	SCREW 1/8-44 L=4.5	1	143		B1202-241-H00	MAIN SHAFT BUSHING, FRO	1
34		SS-6151220-SP	SCREW 15/64-28 L=11.5	1	144		B1230-051-000	LEATHER PLUG	1
35		SD-0800481-SP	HINGE SCREW D= 8 H= 4.9	1	145		CO-2520000-00	OIL WICK	1
36		B1460-245-000	PRESSER LIFTING LEVER BASE	1	146		B1429-241-H00	NEEDLE BAR FRAME LOCK	1
37		SS-7111310-SP	SCREW 11/64-40 L=12.8	1	147		B1203-241-H00	BUSHING ASM., INTERCK	1
38		B1461-245-000	GUIDE SHAFT HINGE SCREW	1	148		CO-2520000-00	OIL WICK	1
39		B1511-555-000	NUT 1/2-28	1	149		B1431-241-H00	ROCK SHAFT REAR CRANK	1
40		B1509-555-000	PRESSER SPRING REGULATOR	1	150		SS-7151210-SP	SCREW 15/64-28 L=12	1
41		B1905-241-H00	THREAD TAKE-UP LEVER ASM.	1	151		B1424-158-000	HINGE SCREW	1
42		B1905-241-H00	THREAD TAKE-UP LEVER	(1)	152		RS-0700000-K0	SNAP RING 7	1
43		B1906-051-000	TAKE-UP LEVER PIN ASM.	(1)	153		CS-1271012-SH	THRUST COLLAR D=12.7 W	1
44		CO-2020000-00	OIL WICK	(0.1)	154		SS-8660610-TP	SCREW 1/4-40 L=6	1
45		B1907-051-000	TAKE-UP LEVER THRUST PIN ASM.	(1)	155		B1434-241-H00	DRIVING ROD	1
46		CO-2020000-00	OIL WICK	(0.1)	156		NS-6680410-SP	NUT 9/32-28	1
47		SS-815150-SP	SCREW 15/64-28 L=10.5	1	157		B1614-241-H00	PITMAN	1
48		B1129-241-H00	FRAME THREAD GUIDE, LEFT	1	158		B1617-241-H00	HINGE SCREW, A	1
49		B1130-241-H00	FRAME THREAD GUIDE, RIGHT	1	159		B1619-241-H00	FEED CONNECTING LINK	1
50		SS-5090610-SP	SCREW 9/64-40 L=6	2	160		B1302-241-H00	BUSHING ASM., UPPER	1
51		B1128-522-000	THREE HOLE THREAD EYELET	1	161		CO-2520000-00	OIL WICK	1
52		SS-8110510-SP	SCREW 11/64-40 L=5	1	162		B1303-271-000	BUSHING, LOWER	1
53		B1158-563-000	THREAD TAKE-UP LEVER COVER	1	163		SS-815150-SP	SCREW 15/64-28 L=10	1
54		SS-7150740-SP	SCREW 15/64-28 L=7	2	164		B1617-241-H00	HINGE SCREW, A	1
55		B1140-051-000	TAKE-UP OIL SPLASHER	1	165		B1622-241-H00	HINGE PIN	1
56		SS-3090520-SP	SCREW 9/64-40 L=4.5	1	166		SS-7151210-SP	SCREW 15/64-28 L=12	1
57		D1462-241-E00	CONNECTING PIN ROLLER	1	167		B1301-241-H00	UPRIGHT SHAFT	1
58		D1459-241-E00	L SHAPED LINK	1	168		B1650-241-H00	FEED REGULATOR SUPPORT	1
59		B1465-053-000	WALKING BAR DRIVING LINK	1	169		SS-7151330-SP	SCREW 15/64-28 L=13.0	1
60		B1458-241-H00	UPPER FEED CONNECTING LINK	1	170		SS-6151220-SP	SCREW 15/64-28 L=11.5	1
61		B1457-055-000	SCREW STUD	1	171		SD-0640231-SP	HINGE SCREW D= 6.35 H=	1
62		NS-6660430-SP	NUT 1/4-40	1	172		B1635-241-H00	STITCH LENGTH REGULATI	1
63		B1455-053-000	BUSHING	2	173		B1148-555-000	SPRING	1
64		B1456-053-000	UPPER FEED DRIVING SHAFT	1	174		B1147-555-000	PIN	1
65		D1456-055-000	HINGE SCREW	1	175		B1623-241-E00-A	STICH DIAL ASM.	1
66		D1454-055-BA0	UPPER FEED SPRING ROD ASM.	1	176		SS-6121050-SP	SCREW 3/16-28 L= 9.0	1
67		SS-9161610-SP	SCREW 1/4-24 L=16	1	177		SS-8661040-TP	SCREW 1/4-40 L=10	1
68		D1455-055-BA0	CONNECTING STUD	1	178		SS-7020750-SP	SCREW 3/16-32 L= 6.5	1
69		D1453-055-BA0	UPPER FEED DRIVING ROD	1	179		SS-8660810-TP	SCREW 1/4-40 L=8	1
70		B1702-012-000	OIL FELT	1	180		B1624-586-000	REVERSE FEED CONTROL L	1
71		PS-0600122-KH	SPRING PIN 6X12	1	181		B1627-241-H00	CONTROL LEVER CRANK AS	1
72		B1213-012-000	FELT RETAINER	1	182		SS-6121210-SP	SCREW 3/16-28 L=12	1
73		WP-0482086-S0	WASHER 4.8X11.5X2	1	183		SS-6150710-SP	SCREW 15/64-28 L=7	1
74		NS-6110530-SP	NUT 11/64-40	1	184		B2115-271-000	NEEDLE THROW LINK	1
75		B1395-271-000	GEAR CASE ASM.	1	185		D1620-241-E00	FEED REGULATOR	1
76		SH-6031202-TP	SCREW M3X0.5 L=12	2	186		B1621-241-H00	REVERSE FEED CONTROL L	1
77		B1118-241-H00	SIDE PLATE	1	187		B1646-241-H00	TENSION SPRING	1
78		SS-6121010-SP	SCREW 3/16-28 L=10	2	188		B1648-122-000	SUSPENSION HOOK (B)	1
79		B1150-241-H00	TOP COVER	1	189		SS-7090710-SP	SCREW 9/64-40 L= 6.8	1
80		SS-7119710-SP	SCREW 11/64-40 L=7	2	190		B1211-220-000	ECCENTRIC RETAINER HOU	1
81		SS-7111810-SP	SCREW 11/64-40 L=18	1	191		B1212-612-000	OIL FELT	1
82		B8218-241-H00	OIL PAD	1	192		B1213-012-000	FELT RETAINER	1
83		B8217-241-H00	OIL RESERVOIR	1	193		B1211-141-H00	FEED DRIVE ECCENTRIC C	1
84		B1227-141-H00-A	HAND WHEEL	1	194		SS-8150710-SP	SCREW 15/64-28 L=7	1
85		SS-7701010-SP	SCREW 5/16-24 L=10	1	195		NS-6680410-SE	NUT 9/32-28	1
86		SS-8151550-SP	SCREW 15/64-28 L=15	1	196		SD-1000952-SP	HINGE SCREW D=10 H=8.5	1
87		SS-7040510-TP	SCREW 1/8-44 L=4.5	1	197		SD-1000951-SP	HINGE SCREW D=10 H=9.5	1
88		B3502-115-000	OIL WICK RETAINER	1	198		CS-1111010-SH	THRUST COLLAR ASM. D=11	1
89		CO-2020000-00	OIL WICK	(0.1)	199		SS-8660610-TP	SCREW 1/4-40 L=6	1
90		B1204-241-H00	BUSHING ASM., REAR	1	200		B3415-141-H00	LIFTING LEVER CONNECTI	1
91		CO-2520000-00	OIL WICK	(0.1)	201		NS-6620210-SP	NUT 3/16-32	1
92		B1203-051-000	OIL FELT	1	202		B2416-141-H00-A	SWIVEL	1
93		B1305-241-H00	GEAR & PINION ASM.	1	203		NS-0790351-SP	HINGE SCREW D=7.9 H=3.1	1
94		B1305-241-H00	GEAR ASM.	(1)	204		B3410-241-H00-A	PRESSER BAR LIFTING LE	1
95		B1305-241-H00	GEAR ASM.	(1)	205		ES-0002222-KF	SPRING PIN	1
96		SS-8660810-TP	SCREW 1/4-40 L=8	(1)	206		SP-1127321-SP	HINGE SCREW D=12.70 H=	1
97		SS-8660610-TP	SCREW 1/4-40 L=6	(1)	207		B1414-233-000	SQUARE BLOCK	1
98		B1306-155-000	PINION ASM.	(1)	208		B1410-771-000	STUD	1
99		SS-8660810-TP	SCREW 1/4-40 L=8	(2)	209		B1423-051-000	NEEDLE BAR FRAME GUIDE	1
100		B1307-155-000	GEAR & PINION ASM., LOWER	(1)	210		SS-911010-SP	SCREW 11/64-40 L=9.0	1
101		B1307-155-000	GEAR ASM. LARGE	1	211		RP-0480550-SP	WASHER 4.8X8.4X0.8	1
102		SS-8660810-TP	SCREW 1/4-40 L=8	2	212		RP-0500711-KP	SNAP RING 5	1
103		B1308-155-000	PINION ASM.	1	213		B1504-012-000-A	FEED BAR SHAFT ASM.	1
104		SS-8660810-TP	SCREW 1/4-40 L=8	2	214		CO-2020000-00	OIL WICK	1
105		B1708-241-H00	CRANK CONNECTING ROD	1	215		B1902-241-H00	FEED BAR ASM.	1
106		B1702-012-000	OIL FELT	1	216		B1602-241-H00	FEED BAR	1

ITEM	QTY	DESCRIPTION
1	1	...
2	1	...
3	1	...
4	1	...
5	1	...
6	1	...
7	1	...
8	1	...
9	1	...
10	1	...
11	1	...
12	1	...
13	1	...
14	1	...
15	1	...
16	1	...
17	1	...
18	1	...
19	1	...
20	1	...
21	1	...
22	1	...
23	1	...
24	1	...
25	1	...
26	1	...
27	1	...
28	1	...
29	1	...
30	1	...
31	1	...
32	1	...
33	1	...
34	1	...
35	1	...
36	1	...
37	1	...
38	1	...
39	1	...
40	1	...
41	1	...
42	1	...
43	1	...
44	1	...
45	1	...
46	1	...
47	1	...
48	1	...
49	1	...
50	1	...
51	1	...
52	1	...
53	1	...
54	1	...
55	1	...
56	1	...
57	1	...
58	1	...
59	1	...
60	1	...
61	1	...
62	1	...
63	1	...
64	1	...
65	1	...
66	1	...
67	1	...
68	1	...
69	1	...
70	1	...
71	1	...
72	1	...
73	1	...
74	1	...
75	1	...
76	1	...
77	1	...
78	1	...
79	1	...
80	1	...
81	1	...
82	1	...
83	1	...
84	1	...
85	1	...
86	1	...
87	1	...
88	1	...
89	1	...
90	1	...
91	1	...
92	1	...
93	1	...
94	1	...
95	1	...
96	1	...
97	1	...
98	1	...
99	1	...
100	1	...

REF. NO.	QTY	PART NO.	DESCRIPTION	QTY
221	1	B1604-141-H90	BUSHING, FRONT	1
222	1	SS-8150710-SP	SCREW 15/64-28 L=7	1
223	1	B1603-141-HA0	FEED ROCKER ASM.	1
224	1	SS-7121410-SP	SCREW 3/16-28 L=14	1
225	1	B1201-241-HA0	HQX DRIVING SHAFT ASM.	1
226	1	CS-2000000-00	OIL WICK	1
227	1	B1613-241-E9R	FEED DOG 4X2.5 WITH DITCH	1
228	1	SS-4080620-TP	SCREW 1/8-44 L=6	2
229	1	B1105-241-H00-A	THROAT PLATE	1
230	1	SS-2110920-TP	SCREW 11/64-40 L=8.5	2
231	1	B1601-141-H00	FEED ROCK SHAFT	1
232	1	B1605-241-H00-A	FEED ROCK SHAFT CRANK	1
233	1	SS-7151610-SP	SCREW 15/64-28 L=10	1
234	1	118-47308	BUSHING, REAR	1
235	1	SS-8150710-SP	SCREW 15/64-28 L=7	1
236	1	SP-1000951-SP	HINGE SCREW D=10 H=9.5	1
237	1	B3009-141-H0B	NUT	1
238	1	WF-0742016-SF	WASHER	1
239	1	NS-6680410-SF	NUT 9/32-28	1
240	1	B1307-271-0A0	PINION CASE ASM.	1
241	1	SM-0051410-SC	SCREW M5X0.8 L=14	1
242	1	B1806-271-000	LOWER SHAFT BUSHING, REAR	1
243	1	SS-8150710-SP	SCREW 15/64-28 L=7	1
244	1	CS-079101A-SH	THRUST COLLAR ASM. D=7.94 W=10	2
245	1	SS-8110520-TP	SCREW 11/64-40 L=4.5	1
246	1	B1803-141-HA0	BUSHING ASM., INTERMEDIATE	1
247	1	CS-2020000-00	OIL WICK	1
248	1	SS-8150710-SP	SCREW 15/64-28 L=7	1
249	1	B1151-141-H00	LUBRICATING OIL PUMP COVER	1
250	1	TA-0750404-R0	PLUG D=7.5 L=3.5	1
251	1	B1152-141-H00	GASKET	1
252	1	B1155-141-H00	OIL PIPE	1
253	1	B1156-141-H00	FELT HOLDER	1
254	1	SS-8151150-SP	SCREW 15/64-28 L=10.5	1
255	1	B1802-141-H00-A	DRIVING SHAFT BUSHING, FRONT	1
256	1	B1835-241-H00	BOBBIN CASE POSITIONING FINGER	1
257	1	B1829-241-H00	THREAD PRESSER PLATE	1
258	1	B1830-241-HA0	HOOK ASM.	1
259	1	B9117-201-000	BOBBIN	1
260	1	B1837-241-H00	BOBBIN CASE	1
261	1	SS-6111620-SP	SCREW 11/64-40 L=16.0	1
262	1	NS-6110530-SP	NUT 11/64-40	1
263	1	B1234-512-000-A	OIL ADJUSTING SCREW	1
264	1	B1154-141-H00	OIL PUMP COVER	1
265	1	SS-6111210-SP	SCREW 11/64-40 L=12	4
266	1	SS-8150710-SP	SCREW 15/64-28 L=7	1
267	1	B1604-141-H00	BUSHING, FRONT	1
268	1	D1704-241-E00	UP AND DOWN FEED FORKED	1
269	1	SS-7111120-SP	SCREW 11/64-40 L=10.5	1
270	1	B1601-141-H00	FEED ROCK SHAFT	1
271	1	B3402-141-HA0-A	BELL CRANK BRACKET ASM.	1
272	1	B3406-141-H00	SPRING	1
273	1	SS-7120910-SP	SCREW 3/16-28 L=9	2
274	1	B1703-241-HA0	DRIVING SHAFT CRANK ASM., REAR	1
275	1	SS-6151920-SP	SCREW 15/64-28 L=19.0	1
276	1	SS-8151550-SP	SCREW 15/64-28 L=15	1
277	1	118-47308	BUSHING, REAR	1
278	1	CS-111101C-SH	THRUST COLLAR ASM. D=11.11 W=10	1
279	1	SS-8660610-TP	SCREW 1/4-40 L=6	1
280	1	B3121-241-HA0	TENSION RELEASE LEVER ASM.	1
281	1	B3134-051-000	TENSION RELEASE LEVER	1
282	1	SD-0470281-SP	HINGE SCREW D=4.7 H=2.8	1
283	1	B3127-051-000	TENSION RELEASE PIN, SHORT	1
284	1	B3124-241-HA0	TENSION STUD ASM.	1
285	1	B3126-051-000	TENSION DISC	1
286	1	B3132-051-000	TENSION DISC HOLDER	1
287	1	B3129-526-000	TENSION SPRING (1.2)	1
288	1	B3125-012-000	THREAD TENSION NUT	1
289	1	SS-4080610-SP	SCREW 1/8-44 L=6.4	1
290	1	B3137-051-0A0	TAKE-UP SPRING GUIDE DISC ASM.	1
291	1	B3123-051-000	TAKE-UP SPRING STUB	1
292	1	B3128-051-000	THREAD TAKE-UP SPRING, A	1
293	1	B3122-053-000	TENSION RELEASE BAR	1
294	1	SS-7110720-SP	SCREW 11/64-40 L=7	1
295	1	SS-8111251-SP	SCREW 11/64-40 L=12.0	1
296	1	B3138-512-000	TAKE-UP SPRING ADJUSTING PLATE	1
297	1	SS-7090520-SP	SCREW 9/64-40 L=4.5	1
298	1	B1103-141-H00	SCALE BASE PLATE	1
299	1	SS-7110720-SP	SCREW 11/64-40 L=7	2
300	1	196-61607	TENSION THREAD GEAR PLATE	1
301	1	SS-4120615-SP	SCREW 3/16-28 L=6	1

Ed Raichert, Inc  
 Industrial Sewing Equipment  
 3517 N 42nd Ave Phoenix, Arizona 85019  
 ph:602-272-2301 ph 800-422-3153 www.raichert.com  
 fax 602-272-0509 email les@raichert.com

JUKI CORPORATION  
 INTERNATIONAL SALES DIVISION  
 8-2-1, KOKURYO-CHO,  
 CHOFU-SHI, TOKYO 182, JAPAN

PHONE: 03 (3430) 4001-S  
 FAX: 03 (3430) 4903, 4909, 4914  
 TELEX: J22967